

✦ Quilt Beginnings ✦
Sensational Serger Shirt
Supply List

Instructor: Linda Teufel

Date: Saturday, October 27 (10am to 4pm, half hour lunch)

Project description: Start with 6 coordinated fabrics and create a fashion statement!

Pattern: *Modern Medley Shirt by Indygo Junction*

Fabric requirements:

Back & 1 Front: $1 \frac{1}{2}$ y.

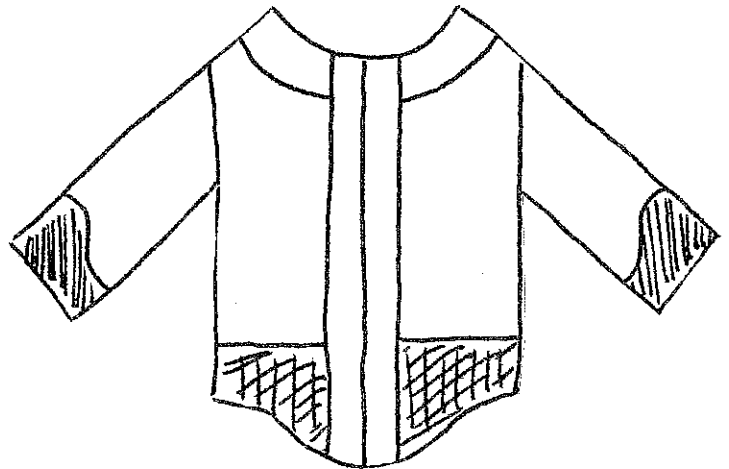
1 Front: $\frac{3}{4}$ y.

Sleeves: 1 y.

Front & Neck Trim: $\frac{1}{2}$ y.

Sleeve Overlay: $\frac{1}{4}$ y.

Back Overlay: $\frac{1}{4}$ y.



Sewing supplies:

Serger and accessories . Curving foot if you have one.

Modern Medley shirt pattern

Fabric and buttons

4 cones serger thread to contrast or match fabric

Pins (Clover flat flower head pins if you have)

Ruler

Scissors 8" for cutting pattern/fabric

Blue washaway marker

Pen or pencil

Tape measure

Large eye needle

Scotch tape

Prior to class: PLEASE DO NOT CUT OUT THE SHIRT.